



# NIH Medical Research Scholars Program Application Webinar

9 November 2023



 @ccmeded

# AGENDA

- Welcome
- Program Overview
- MRSP Administrative Topics and Application Process
- Scholar Panel
- Q&A (send questions via chat)



# WELCOME



Tom Burklow, M.D.  
Director, Office of Clinical Research Training  
and Medical Education



Office of Clinical Research Training and Medical Education

# WELCOME



Dina Parekh, M.D.  
Director, Medical Research Scholars Program



Office of Clinical Research Training and Medical Education

# PROGRAM OVERVIEW



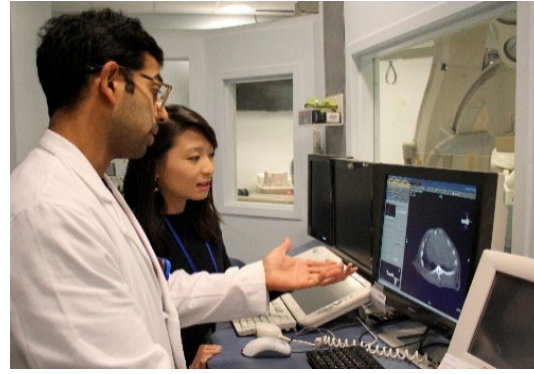
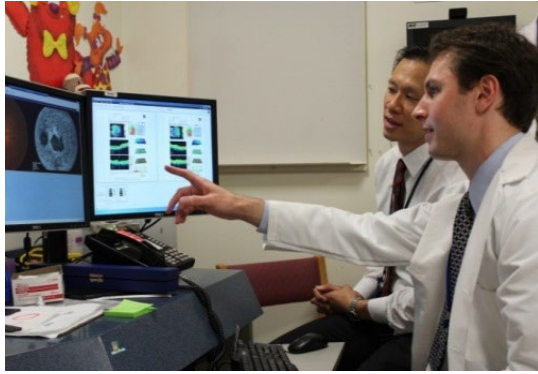
Susan Leitman, M.D.

Academic Director, Medical Research Scholars Program



Office of Clinical Research Training and Medical Education

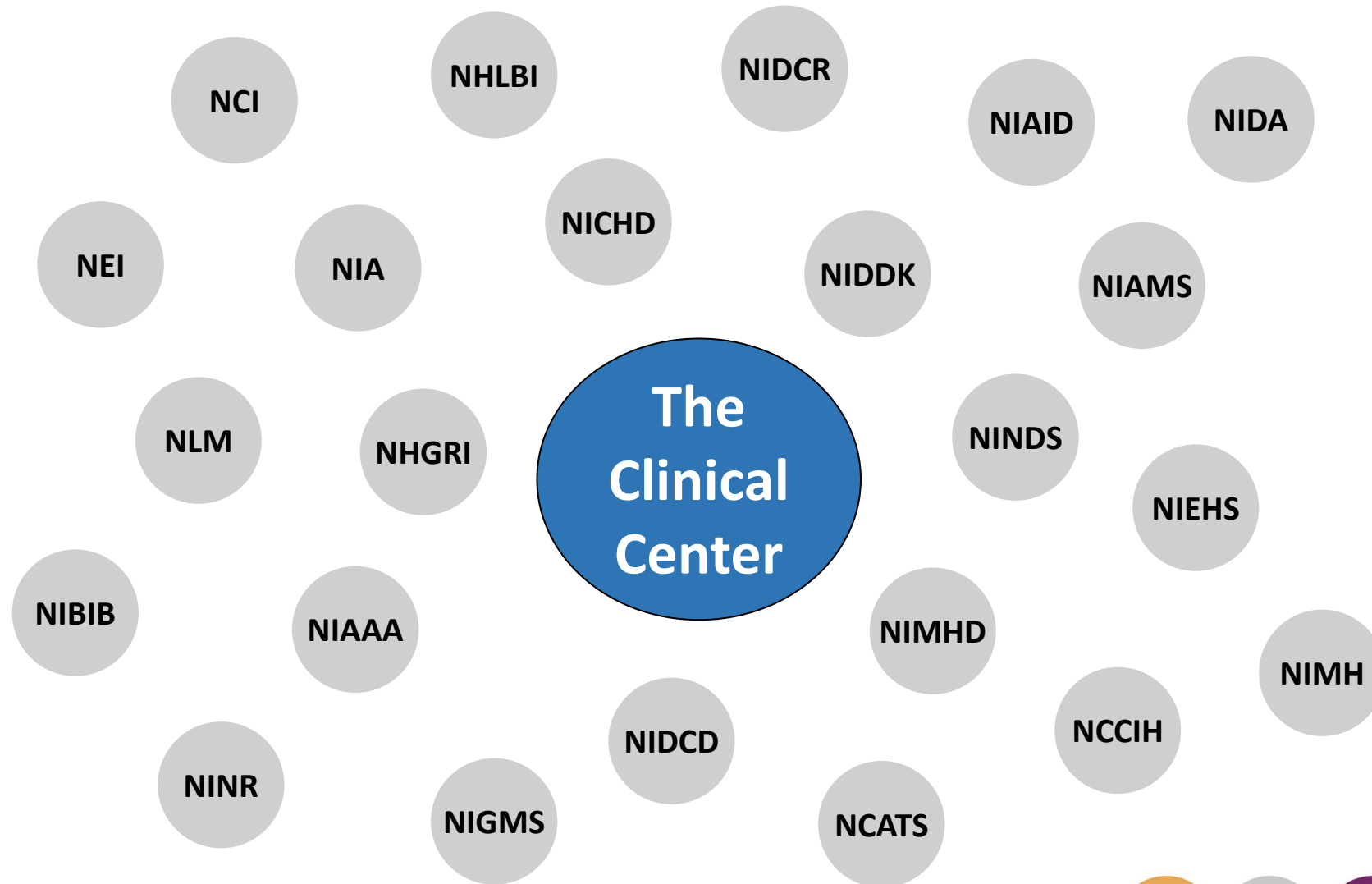
# OVERVIEW



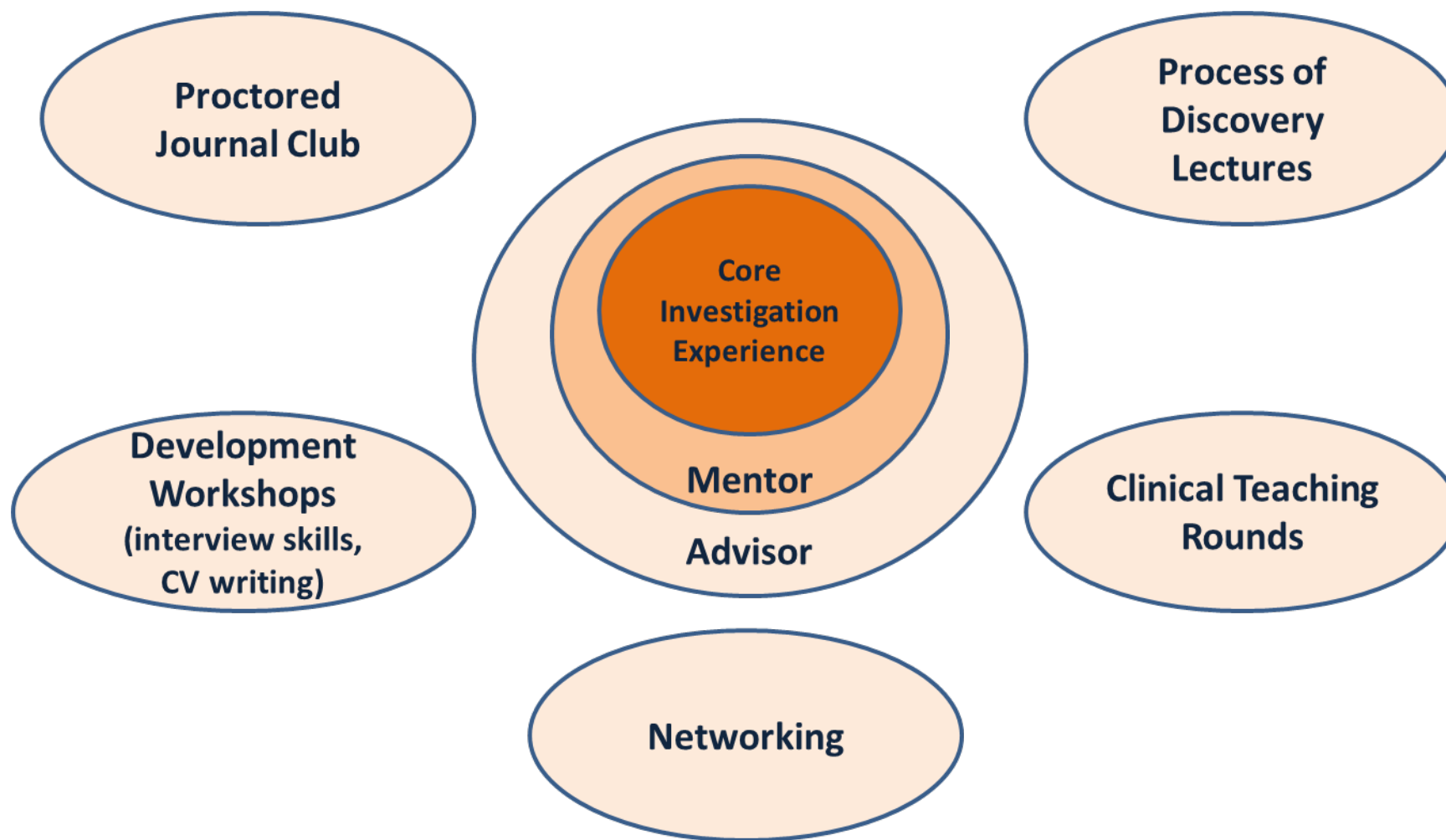
- A comprehensive, year-long research enrichment and career development program for medical, dental, and veterinary students
- Located on the NIH Bethesda and satellite research campuses
- Co-sponsored by the NIH and private partners via contributions to the Foundation for the NIH
- Scholars are engaged in a mentored basic, translational, or clinical research project with an experienced research mentor that matches their professional interests and career/ research goals



# EXPLORE SCIENTIFIC AND CLINICAL INTERESTS



# PROGRAM ELEMENTS





# ADVISOR AND MENTOR

- Advisor
  - Oversees the Scholar's training
  - Helps to identify a research Mentor
  - Offers guidance and career counseling
- Research mentors
  - Identified by Scholar prior to arrival
  - Oversees research project
  - More than 350 select NIH mentors



# DIDACTIC CURRICULUM

- Lecture presentations highlighting the continuum of scientific discovery
- Training in the understanding of clinical protocol development and the conduct of human subjects research
- Journal Club presentations by the Scholars
- Focused clinical teaching rounds with patients participating in research protocols at the NIH Clinical Center



# '23-'24 CLASS PROFILE

## Class size

- 52 Scholars

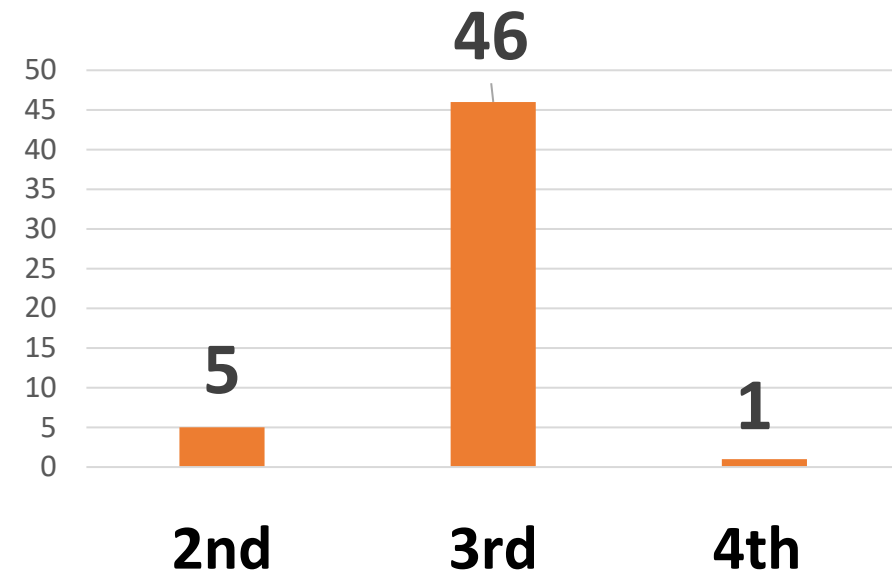
## Gender

- 29 women (56%)
- 23 men (44%)

## Diversity

- URM 17%

## Class Year Distribution



# SCHOOL REPRESENTATION

Albany Medical College  
Albert Einstein College of Medicine  
Baylor College of Medicine  
Boston University School of Medicine  
Case Western Reserve University School of Medicine  
Cleveland Clinic Lerner College of Medicine of Case Western University  
David Geffen School of Medicine at UCLA  
Drexel University College of Medicine  
Duke University School of Medicine  
Eastern Virginia Medical School  
FIU Herbert Wertheim College of Medicine  
Florida State University College of Medicine  
Georgetown University School of Medicine  
Johns Hopkins University School of Medicine  
Louisiana State University School of Medicine in Shreveport  
Medical College of Georgia at Augusta University  
Medical University of South Carolina College of Medicine  
Pennsylvania State College of Medicine  
Ponce Health Sciences University School of Medicine  
Renaissance School of Medicine at Stony Brook University

Rutgers, Robert Wood Johnson Medical School  
Saint Louis University School of Medicine  
San Juan Bautista School of Medicine  
University of California, Davis School of Medicine  
University of California, San Diego School of Medicine  
University of Central Florida College of Medicine  
University of Kentucky College of Medicine  
University of Maryland School of Medicine  
University of Massachusetts Medical School  
University of Miami Miller School of Medicine  
University of Missouri - Columbia School of Medicine  
University of Missouri - Kansas City School of Medicine  
University of Nevada, Reno School of Medicine  
University of South Carolina School of Medicine, Greenville  
University of Tennessee Health Science Center College of Medicine  
University of Texas at Austin - Dell Medical School  
University of Texas at Houston - McGovern Medical School  
Washington State University Elson S. Floyd College of Medicine  
West Virginia University School of Med



# Administrative Topics and Application Process

Tonya Shackelford and Kenny Williams

MRSP Program Administrators

Jennifer Simmons

Lead Management Analyst



# PROGRAM BENEFITS

- Annual stipend (~\$50,400) distributed in monthly payments
  - Stipend is prorated should you commit to a 10 or 11 month timeframe
- Relocation expenses for arrival to NIH and return to your home institution
- Educational Fund
  - Scientific courses via the [Foundation for Advanced Education in the Sciences](#)
  - Domestic conference travel
  - Textbooks related to research project
- Health insurance – supplemental to the stipend



# PROGRAM HOUSING

- Limited furnished apartment-style housing offered by NIH on the Bethesda Campus
- Personally selected off campus housing within the local D.C., Maryland and Virginia (DMV) area or other NIH campus locations, i.e. North Carolina and Montana
  - Remote work is not permitted in areas outside of NIH established locations in which you are conducting your research

# APPLICATION TIMELINE

Date	Event
October 1st	Application Opened
January 5 <sup>th</sup> , 5PM ET	Application and References Deadline (applications must be complete)
Mid February	Notification of Selection for Interview
March 5 <sup>th</sup> and 6th	MRSP Interviews (virtual)
March 15th	Notification of Selection to Participate
March 22nd	Uniform Deadline to Accept Offer (MRSP, Sarnoff, others)
April 19th	Pre-Arrival Visit for 2024-2025 Scholars
July	Scholars arrive at NIH to begin their year (several arrival dates offered to accommodate home school schedules)





# ELIGIBILITY CRITERIA

- Medical students participate after 2<sup>nd</sup>, 3<sup>rd</sup>, or 4<sup>th</sup> year
- Dental and veterinary students generally participate after 2<sup>nd</sup> or 4<sup>th</sup> year, due to integrated nature of clinical years
- Must be a U.S. citizen or permanent resident of the U.S.
- Good standing in medical, dental, or veterinary school
- Must attend an LCME accredited medical, CODA accredited dental, AOA accredited osteopathic, or AVMA accredited veterinary institution



# ELIGIBILITY CRITERIA

- Approval from Dean or Associate Dean
- Applicants in their 4th year who are selected must make arrangements with their school to defer graduation until completion of MRSP
- 4th year students participating in the National Residency Matching Program during the application cycle are *ineligible*
- Candidates currently enrolled in PhD or MD/PhD programs are *ineligible*

# APPLICATION PROCESS

- Online Application (<https://ocrtmeapps.cc.nih.gov/mrsp/>)
  - Cover letter/personal statement
  - Curriculum Vitae
  - Three letters of recommendation
    - Dean or Associate Dean
    - Two professional references
- **Unofficial** transcript from medical/ dental/ veterinary school
- **Unofficial** transcript from undergraduate institution



# SUCCESSFUL APPLICATION TIPS

- Strong personal statement articulating why you want to participate in the MRSP, including past experiences (personal, clinical, research) that led to this decision, and future career plans
- Prior research experience is desirable but not required
- Dean's letter: not just "in good standing," but insightful comments on your past achievements and future promise
- Your two professional references are from people who can speak to your attributes and research potential



# SCHOLAR PANEL



**Emad Chishti**  
University of Kentucky  
College of Medicine

[emad.chishti@nih.gov](mailto:emad.chishti@nih.gov)

***NIH Clinical Center  
Critical Care Medicine  
Department***



**Kathy Li**  
Medical College of  
Georgia at Augusta  
University

[kathy.li@nih.gov](mailto:kathy.li@nih.gov)

***National Cancer  
Institute***



**Abhi Suri**  
David Geffen School of  
Medicine at UCLA

[Abhi.suri@nih.gov](mailto:Abhi.suri@nih.gov)

***NIH Clinical Center  
Radiology and Imaging  
Sciences***



**Erin Walker**  
University of South  
Carolina School of  
Medicine, Greenville

[erin.walker2@nih.gov](mailto:erin.walker2@nih.gov)

***National Institute of  
Neurological Disorder  
and Stroke***



**Jack Victory**  
West Virginia  
University School of  
Medicine

[jack.victory@nih.gov](mailto:jack.victory@nih.gov)

***National Cancer  
Institute***



Office of Clinical Research Training and Medical Education



# Question and Answer

To see additional information about MRSP, or to apply please visit <https://www.cc.nih.gov/training/mrsp/index.html>

Please email inquiries about MRSP to [mrsp@nih.gov](mailto:mrsp@nih.gov)